



PRESS RELEASE (August 4th, 2005)

EmerGeo.doc

New Emergency Management Application Released in Australia

EmerGeo Solutions Inc. is pleased to announce that it has appointed Spatial Vision as an authorised reseller for the company's successful emergency management application – EmerGeo™. EmerGeo is an application specifically developed to meet the demanding and specialised needs of emergency planners and responders. EmerGeo was built by people with over 30 years of practical hands-on experience using Geographic Information System (GIS) mapping technologies for emergency planning and response. As a result it has been designed from the ground up as a vital aide to emergency management and response.

Used in by an increasing number of emergency management organisations in the US and Canada, EmerGeo is a client/server application that allows emergency operational work groups to import, create and share spatial and other emergency information in a controlled and secure environment and publish this information via a web browser to designated users.

EmerGeo allows incidents to be logged and posted onto a "common operating view" or "situation" map, a map that can be viewed by the entire operations team. Other views can be defined for other groups (eg planning, logistics, etc). Designed around common incident work flows, most planner's or operations manager's tasks are fully integrated within the application.

Users can rapidly add new data sets on the fly, as they become available, without requiring specialist GIS training. Links to other non-spatial data sources (eg web cams and other web resources) can also be added easily.

The unique architecture of EmerGeo enables the client application to operate either with or without a connection to a corporate network. When connected, EmerGeo's synchronisation capability allows the application to automatically download the latest updates or up-load field or other local observations.

EmerGeo does not seek to replace an organisation's existing Geographic Information System (GIS) – in fact it leverages existing investment in such systems and data. EmerGeo's OpenGIS® design ensures emergency planners and responders enjoy quick and simple access to the right map data obtained from one or multiple sources.

Offering full integration with leading commercial off the shelf incident management systems (eg WebEOC® and EM2000™), and with the potential to integrate with other applications, EmerGeo provides an indispensable aide to the collaboration efforts of operations teams.

Who is Spatial Vision?

Spatial Vision works at the leading edge of geospatial and information technology. We develop innovative solutions that integrate geographic information with business applications.

Established in early 1999 and based in Melbourne, Spatial Vision has significant experience in the development of land, natural resource, and asset management and applied social and economic research systems for organisations throughout Australia.

Our Business Partners



In 2002 Spatial Vision was awarded the ESRI New Business Partner of the Year Award.



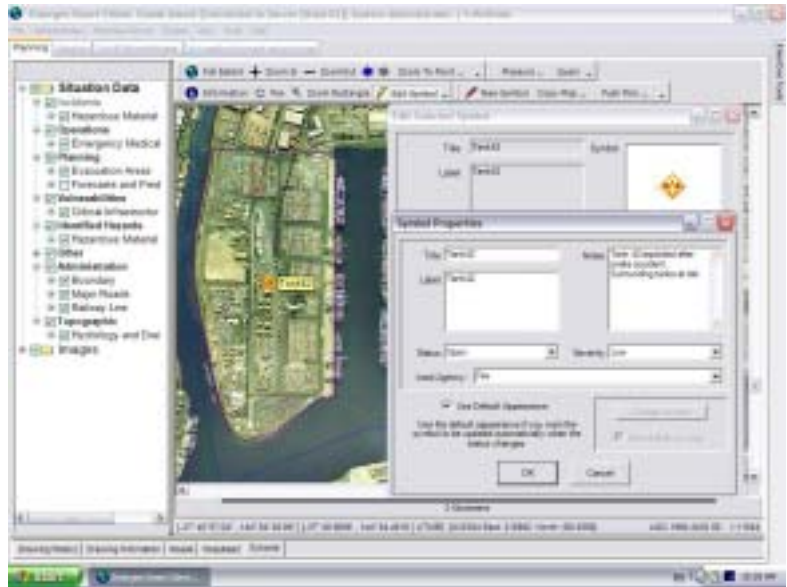
Quality Certification



Figure 1: EmerGeo™ Smart Client highlighting the “new incident” tool

Emergency management organisations without a GIS can get started with EmerGeo client/server solution. Spatial Vision can assist with installation and configuration as well providing base map data.

Mike Morrow, Managing Director of EmerGeo Solutions, states “When selecting an Australian distributor, we wanted an organization with a combination of strong geospatial capabilities and hands-on experience in successfully deploying geo-



spatial applications into the local Emergency Services market. Spatial Vision was the obvious partner and we are very pleased that they are our Australian reseller.”

Glenn Cockerton, Spatial Vision’s Managing Director, said “Spatial Vision is committed to the support of the Emergency Service sector in Australia through the delivery of a range of products and services ranging from hard copy mapping and spatial data supply/management to the development interactive Municipal Emergency Management Plans. EmerGeo represents a significant increase in Spatial Vision’s range of product and services dedicated to the emergency management sector.”

EmerGeo Solutions Inc. is a privately held company incorporated in British Columbia (Canada). The Principals combined have over 30 years of hands-on emergency management experience and software development expertise to develop the EmerGeo software application.

For further information contact:

Graeme Martin

(03 9691 3000)

info@spatialvision.com.au

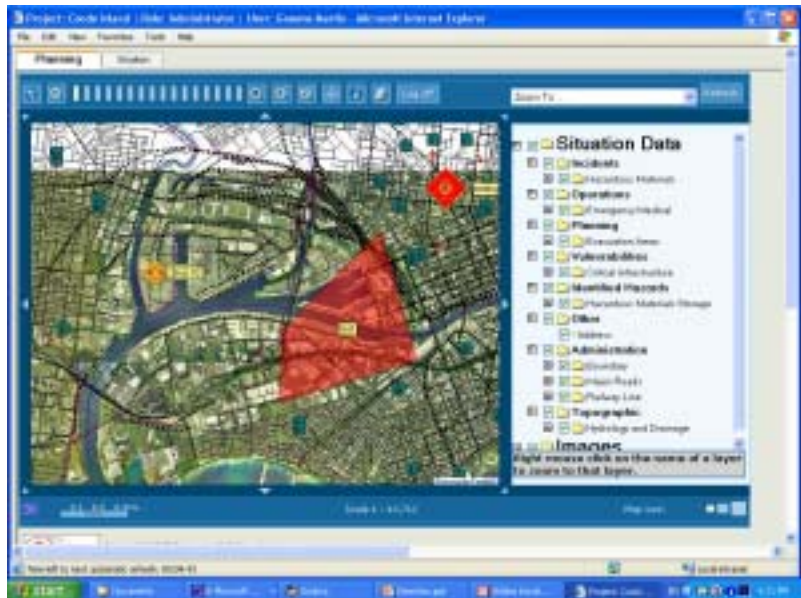


Figure 2: EmerGeo™ Web Client

Click here to visit our website at:
<http://www.spatialvision.com.au>